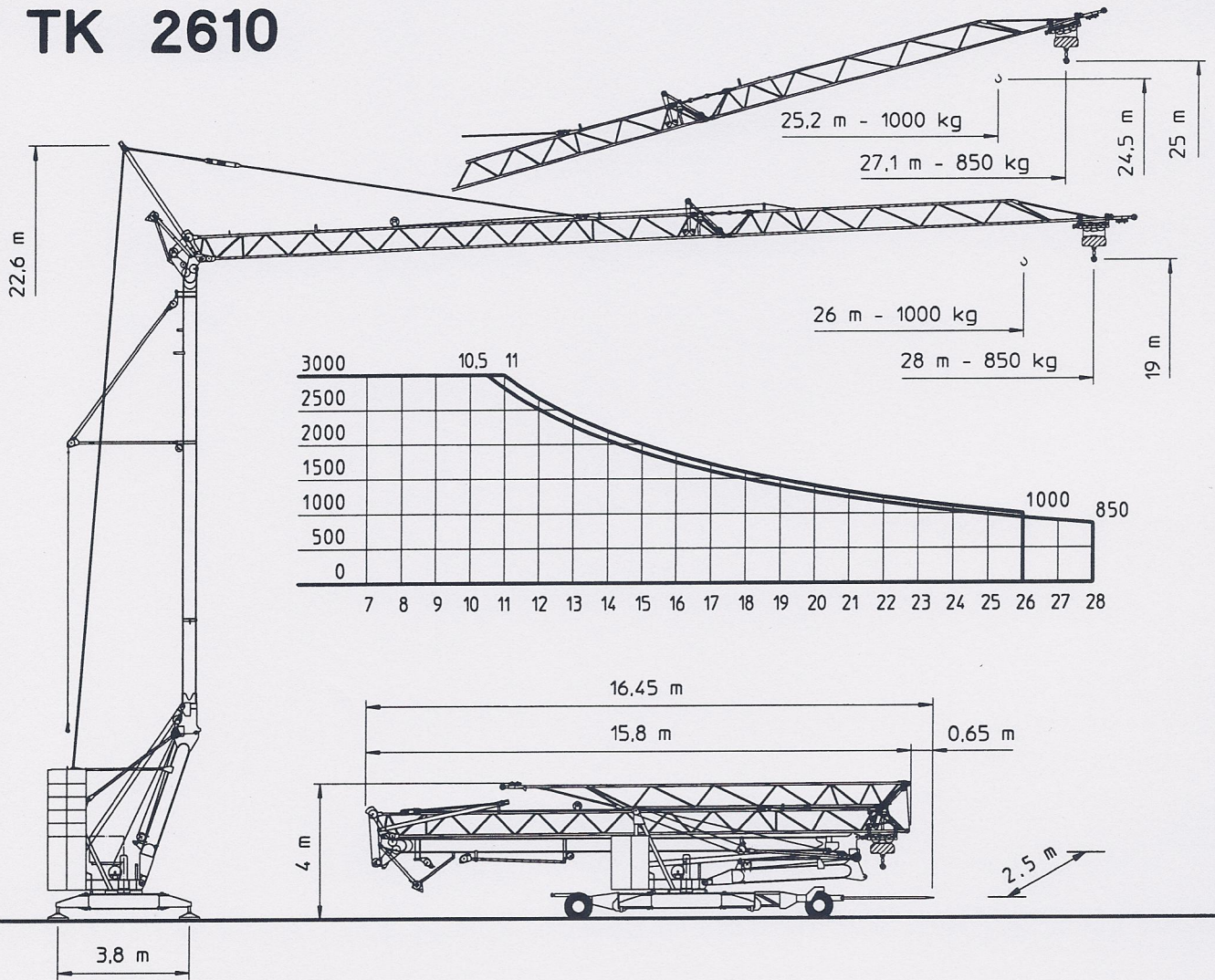




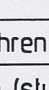




TK 2610



Leistungsdaten	Ausladung (m)	Tragkraft (kg)	Max.Tragkraft (kg)			
Ausleger 26 m horizontal	26	1000	3000			
Ausleger 26 m steil (15°)	25.2	1000	1000			
Ausleger 28 m horizontal	28	850	3000			
Ausleger 28 m steil (15°)	27.1	850	1000			
Geschwindigkeiten	Heben					
		m/min	kg	m/min	kg	
	  	→→→	45	1500	-	-
		→→	22	3000	-	-
		→	5	3000	-	-
Katzfahren			m/min	20/40		
Drehen (stufenlos)			U/min	0.1 ↔ 0.9		
Allgemeine technische Daten	Konstruktionsgewicht	kg	9400			
	Gegengewicht	kg	15000			
	Drehradius	m	2.2			
	Spindelabstand	m	3.8 x 3.8			
	Max.Eckdruck	kN	160			
	Ges.elekt.r.Leistung	kW	17			
	Kabelquerschnitt	400 V	5 x 10 □			